



624 Wellington Way  
Lexington,  
Kentucky 40503  
859-223-5694  
FAX 859-223-2607  
E-Mail: mseinc@mselex.com

**Addendum No. 1**  
**Russell County Industrial Development Authority**  
**The SEED Academy Project**  
**Bid Date: August 22, 2024**  
**Addendum Issue Date: August 7, 2024**

The Contractor shall conform to the following changes, as same shall become binding upon the Contract to be issued in response to this invitation.

Item 1: Replace the following Plan Sheets in Set of Drawings.

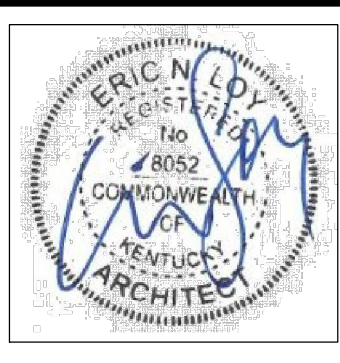
**Revisions to Architectural Plan Sheets**

Sheet A-1      Floor Plan  
Sheet A-4      Wall Section at Auditorium

**Revisions to Civil Plan Sheets**

Sheet C 1      Site Plan  
Sheet C-2      Grading Plan

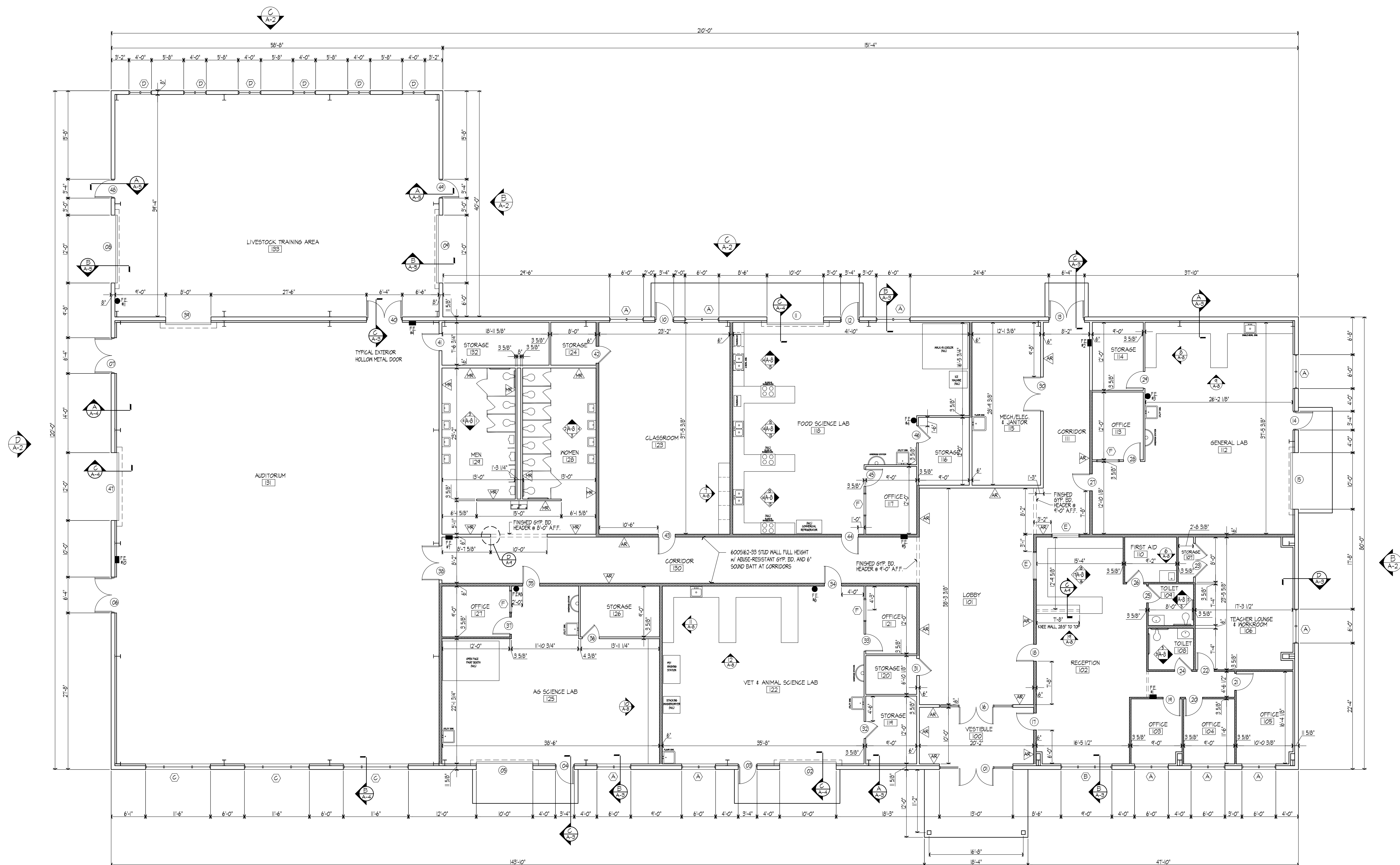
END OF ADDENDUM NO. 1



FLOOR PLAN

# The Seed Academy

Lake Cumberland Regional AgriTech Center  
Russell Springs, Kentucky



NOTE:  
ITEMS NOTED AS "NOT IN CONTRACT" (NIC) WILL BE SUPPLIED AND INSTALLED BY THE OWNER. PLANS AND SPECS SHOW THE REQUIRED MECHANICAL, PLUMBING AND ELECTRICAL CONNECTIONS AS REQUIRED AND AS PART OF THIS BID.

### FLOOR PLAN

SCALE: 1/8"=1'-0"

MAIN BUILDING - 16,800 S.F.  
LIVESTOCK AREA - 2,347 S.F.  
TOTAL AREA - 19,147 S.F.

INTERIOR WALL TYPES	
---	3 5/8" OR 6" 20 GA. METAL STUDS, 16' O.C., W/ 5/8" GYPSUM BOARD EACH SIDE
---	3 5/8" OR 6" 20 GA. METAL STUDS, 16' O.C., W/ 5/8" GYPSUM BOARD EACH SIDE AND SOUND BATT CONTINUOUS
---	3 5/8" OR 6" 20 GA. METAL STUDS, 16' O.C., W/ 5/8" GYPSUM BOARD - ABUSE-RESISTANT (AR) OR MOISTURE-RESISTANT (MR) ON SIDE INDICATED

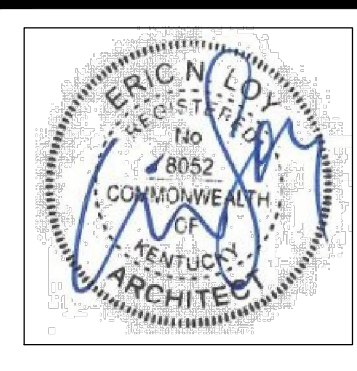
PROJECT NO.	DATE	REVISION	BY
2019-34	8-2-24	R1 - ADD DOORS 48 1 41	ELL
DESIGNED BY	ENL/ELL		
DRAWN BY	ELL		
CHECKED BY			
REVIEWED BY			
DATE	JANUARY 2024		
SCALE	AS NOTED		

This document is the property of M&E of Kentucky, Inc. and is to be used only for the project and location indicated. It is not to be reproduced, copied, or transmitted in any form or by any means, electronic or mechanical, including photocopying, recording, or by any information storage and retrieval system, without the prior written permission of M&E of Kentucky, Inc.

**mse**  
OF KENTUCKY, INC.  
Engineers  
Architects  
Planners

Phone: (859) 223-5684  
Lansing, KY 40033  
www.mseinc.com  
Fax: (859) 223-2607





SECTIONS

The Seed Academy  
Lake Cumberland Regional AgriTech Center  
Russell Springs, Kentucky

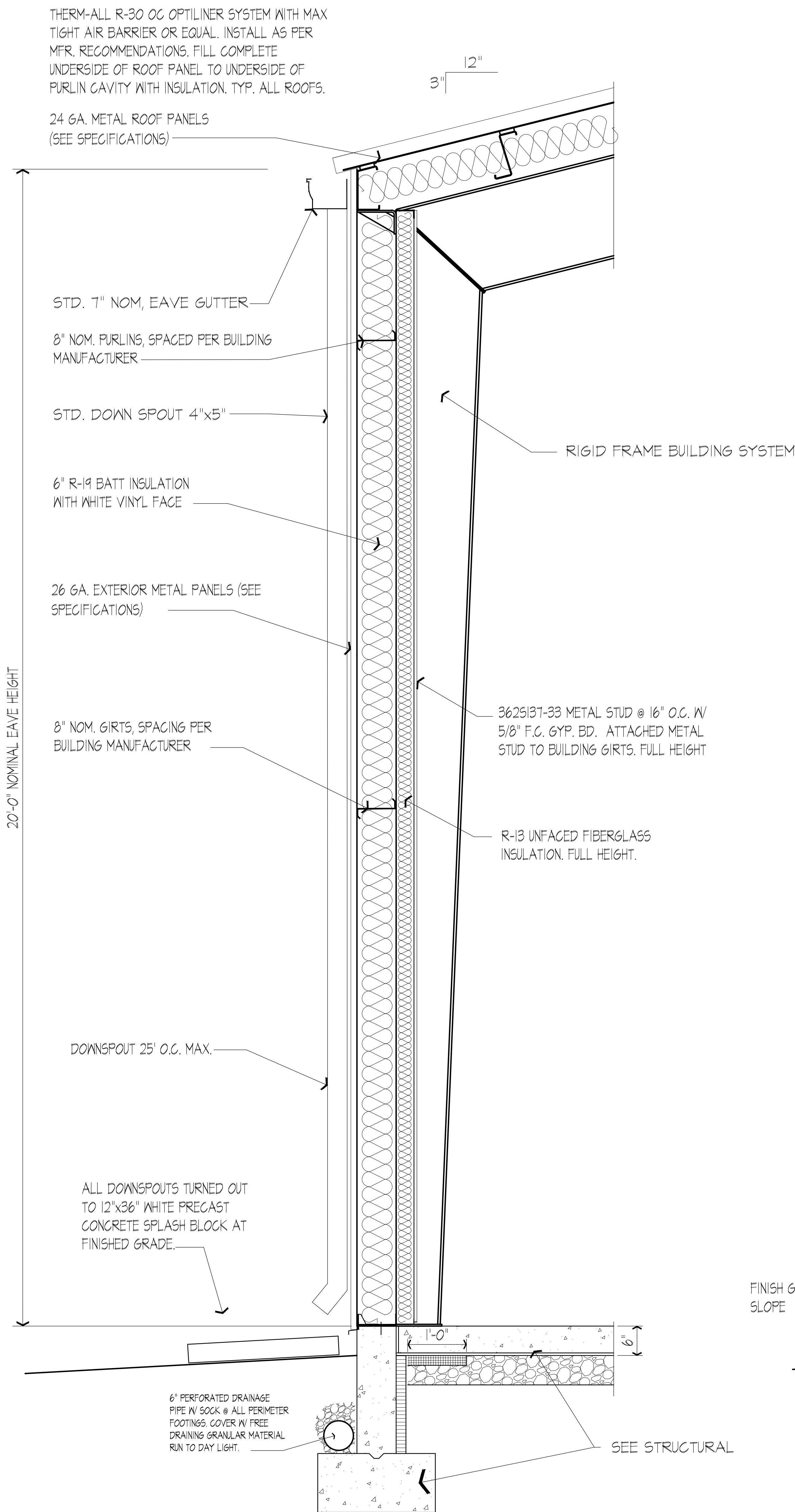
PROJECT NO. 2018-34	DESIGNED BY ENR/BLL	DATE	REVISION
DRAWN BY BLL	CHECKED BY	9-5-24	REVISED
REVIEWED BY	DATE	JANUARY 2024	SCALE
			AS NOTED

DESIGN DOCUMENTS: THESE DOCUMENTS ARE THE PROPERTY OF THE ARCHITECT AND SHALL BE KEPT IN THE ARCHITECT'S OFFICE. NO PART OF THESE DOCUMENTS SHALL BE REPRODUCED OR TRANSMITTED IN ANY FORM OR BY ANY MEANS, ELECTRONIC OR MECHANICAL, INCLUDING PHOTOCOPYING, RECORDING, OR BY ANY INFORMATION STORAGE AND RETRIEVAL SYSTEM, WITHOUT THE WRITTEN PERMISSION OF THE ARCHITECT.

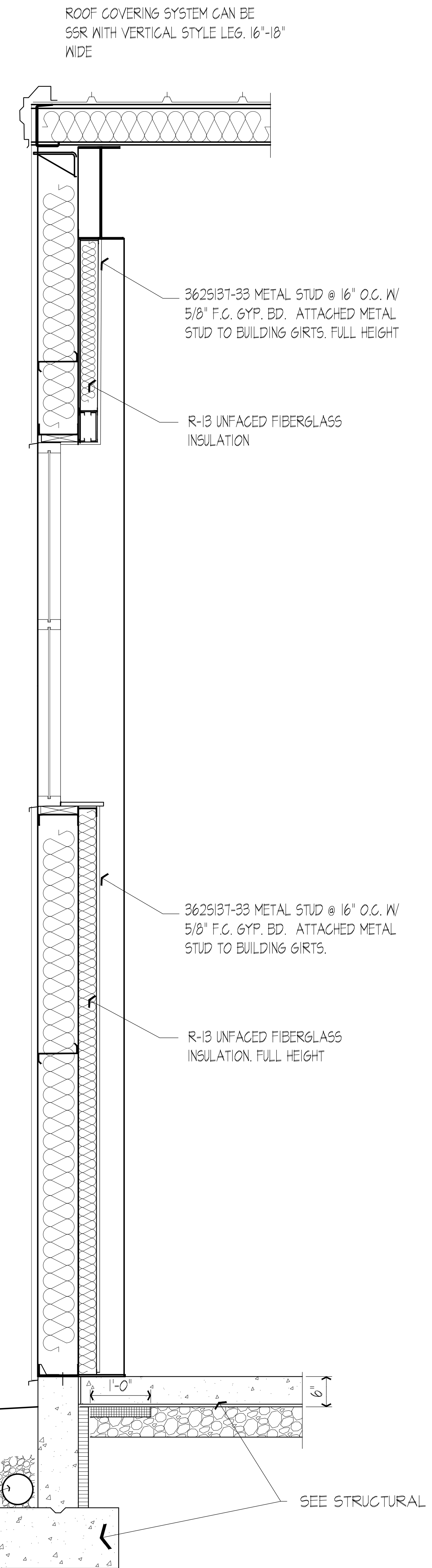
**Engineers  
Architects  
Planners**

**NSP  
OF KENTUCKY, INC.**

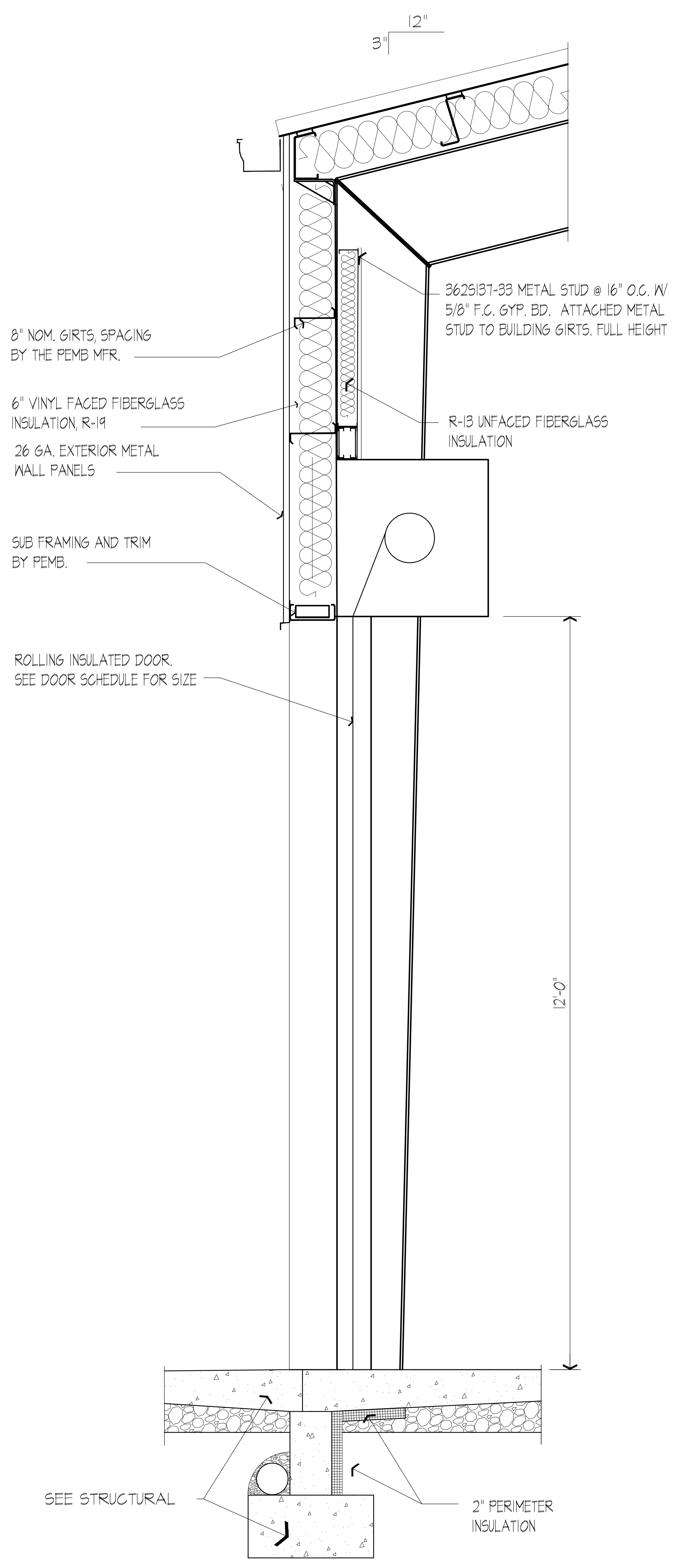
Phone: (859) 223-5800  
Fax: (859) 223-2807  
634 Washington Way  
Lexington, KY 40503  
www.nspk.com



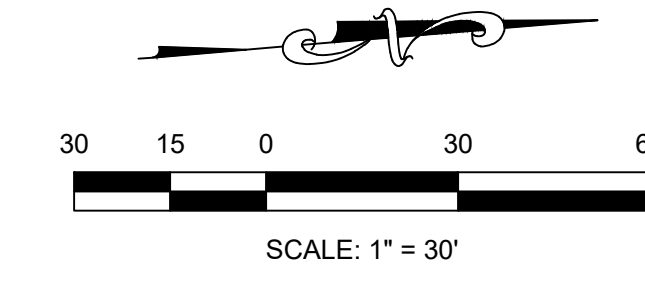
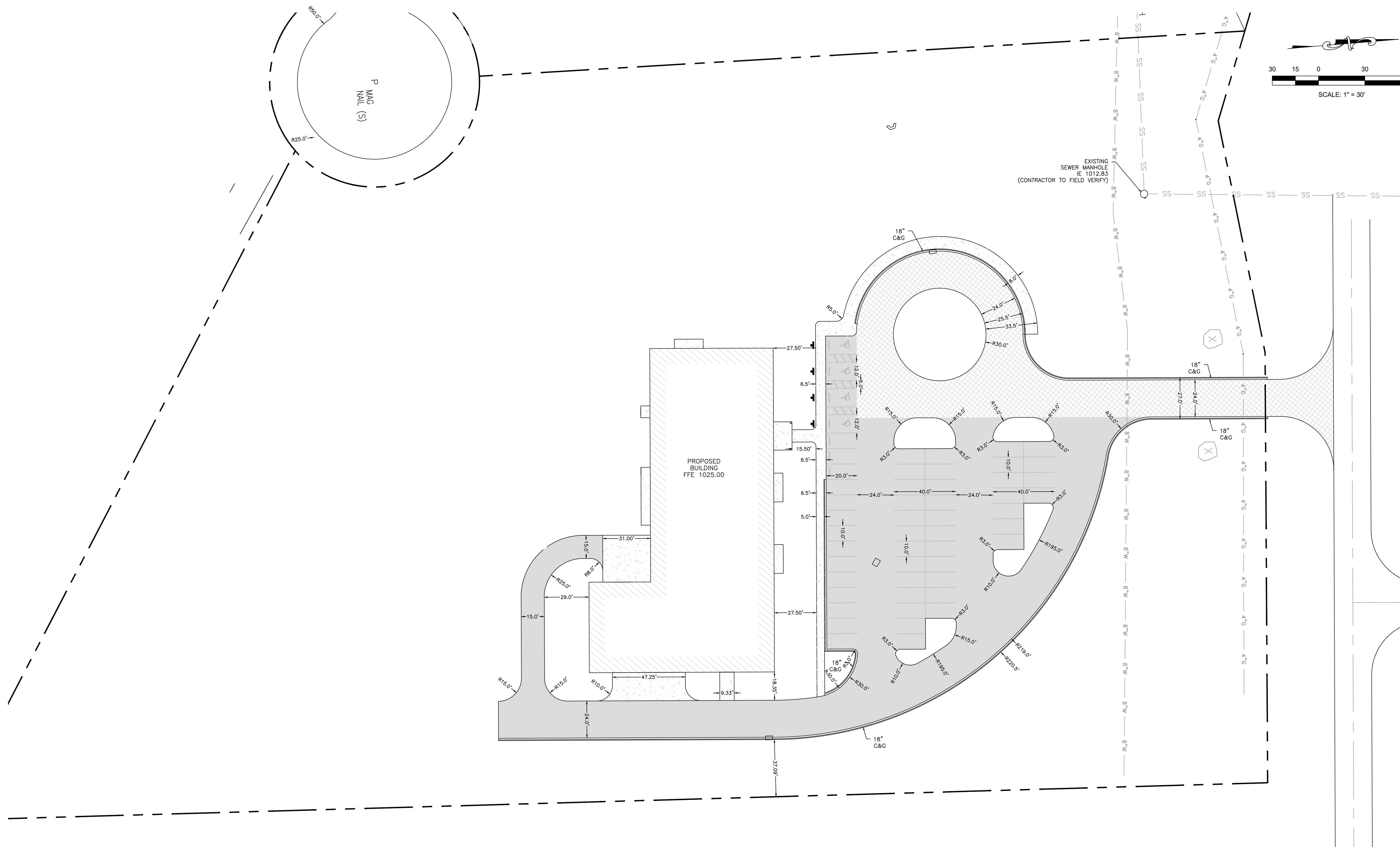
© AUDITORIUM  
**WALL SECTION A**  
SCALE: 1" = 1'-0"  
A-4



© AUDITORIUM  
**WALL SECTION B**  
SCALE: 1" = 1'-0"  
A-4



© AUDITORIUM  
**WALL SECTION C**  
SCALE: 1" = 1'-0"  
A-4



- NOTES:
1. ALL PARKING LOT STRIPING TO BE PLACED AS SHOWN, SEE DETAIL SHEET FOR HANDICAP PARKING DETAILS.
  2. ALL DISTURBED AREAS TO BE SEEDED PER THE 03296 SPECIFICATION.

	HEAVY DUTY PAVEMENT
	LIGHT DUTY PAVEMENT
	CONCRETE PAVEMENT

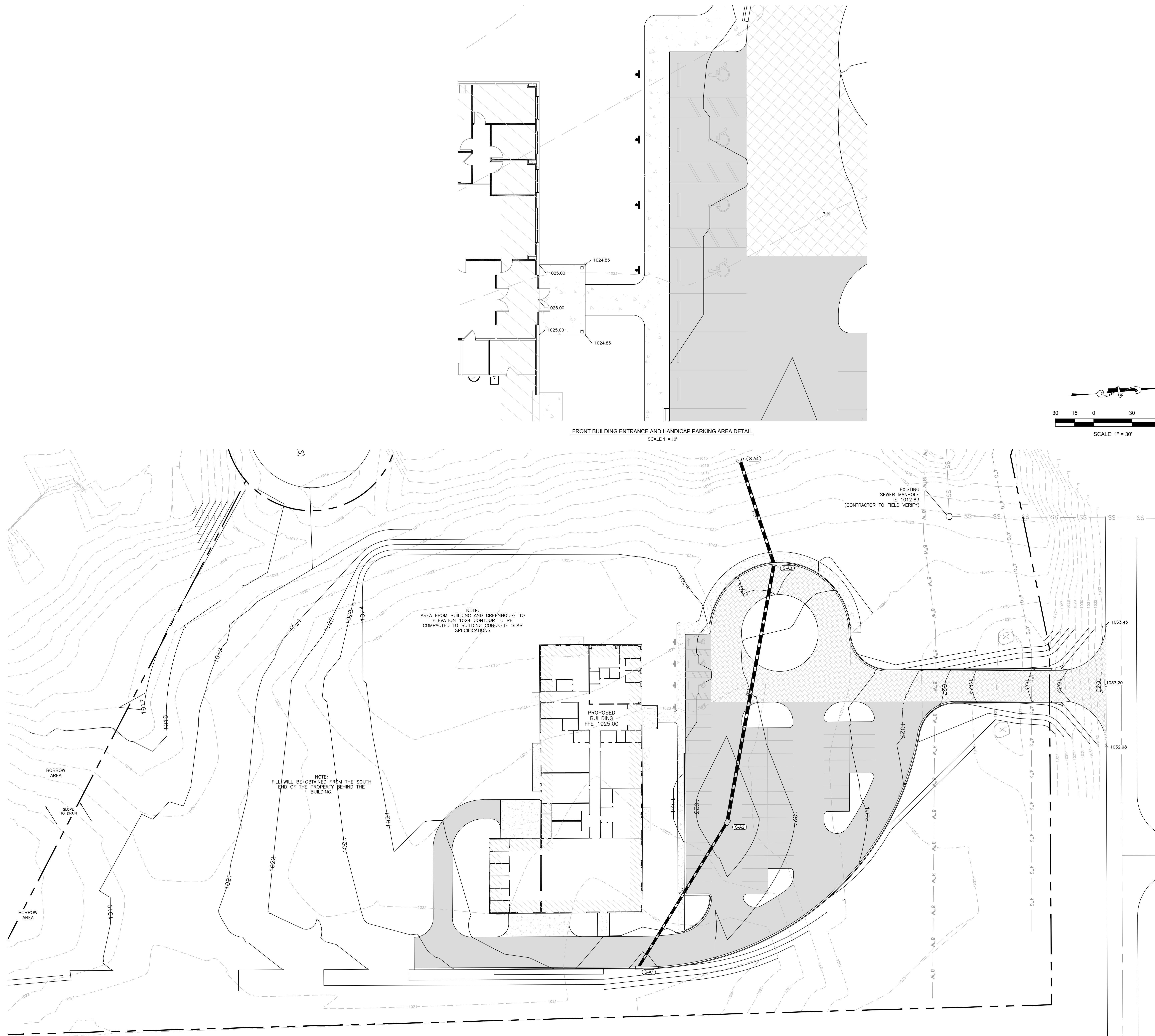
SITE PLAN

**The Seed Academy**  
 Lake Cumberland Regional AgriTech Center  
 Russell Springs, Kentucky

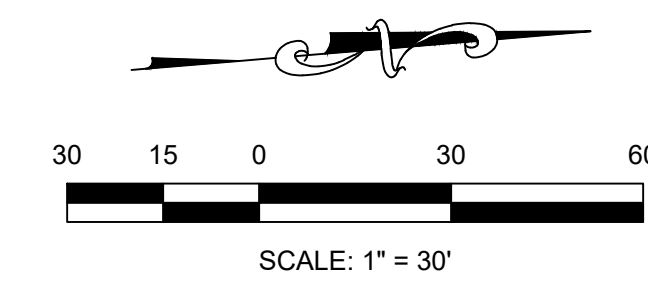
PROJECT NO. 2018-34	DATE	REVISION	BY
DESIGNED BY G.A.R.	7/23	HC AREA REVISIONS	GRH
DRAWN BY J.R.M.			
CHECKED BY G.A.R.			
REVIEWED BY G.A.R.			
DATE JANUARY 2024			
SCALE AS NOTED			

**nse**  
**OF KENTUCKY, INC.**  
 Engineers  
 Architects  
 Planners  
 624 Wellington Way  
 Russell Springs, KY 40386  
 Phone: (859)223-6684  
 Fax: (859)223-2607  
 www.nsekex.com





FRONT BUILDING ENTRANCE AND HANDICAP PARKING AREA DETAIL  
SCALE 1" = 10'



NOTE:  
AREA FROM BUILDING AND GREENHOUSE TO  
ELEVATION 1024 CONTOUR TO BE  
COMPACTED TO BUILDING CONCRETE SLAB  
SPECIFICATIONS

NOTE:  
FILL WILL BE OBTAINED FROM THE SOUTH  
END OF THE PROPERTY BEHIND THE  
BUILDING.

STRUCTURE TABLE				
Structure Name	RW	IE	Type	
S-A1	1022.96	P-A1 1019.75	CURB INLET TYPE 'A' R08-270-09	
S-A2	1022.29	P-A1 1019.08 P-A2 1019.08	DROP INLET TYPE '6" R08-006-08	
S-A3	1022.50	P-A2 1018.05 P-A3 1018.05	CURB INLET TYPE 'A' R08-270-09	
S-A4	1019.75	P-A3 1017.00	HEADWALL R0H-020-03	

PIPE TABLE				
Pipe Name	Size	Length	Slope	Material
P-A1	18"	133.4	0.50%	ADS N12-WT
P-A2	24"	204.9	0.50%	ADS N12-WT
P-A3	24"	84.3	1.24%	ADS N12-WT

DATE  
7/23

REVISION  
HC AREA REVISIONS

BY  
JRM

PROJECT NO. 2078-34

DESIGNED BY C.A.R.

DRAWN BY J.R.M.

CHECKED BY C.A.R.

REVIEWED BY C.A.R.

DATE JANUARY 2024

SCALE AS NOTED

624 Wellington Way  
Cincinnati, OH 45203  
www.nseinc.com

**nse**  
OF KENTUCKY, INC.  
Engineers  
Architects  
Planners

Phone: (619)225-5694  
Fax: (619)225-2607

PROJECT NO. 2078-34

DESIGNED BY C.A.R.

DRAWN BY J.R.M.

CHECKED BY C.A.R.

REVIEWED BY C.A.R.

DATE JANUARY 2024

SCALE AS NOTED

**nse**  
OF KENTUCKY, INC.  
Engineers  
Architects  
Planners

Phone: (619)225-5694  
Fax: (619)225-2607

PROJECT NO. 2078-34

DATE JANUARY 2024

SCALE AS NOTED

624 Wellington Way  
Cincinnati, OH 45203  
www.nseinc.com

**nse**  
OF KENTUCKY, INC.  
Engineers  
Architects  
Planners

Phone: (619)225-5694  
Fax: (619)225-2607

PROJECT NO. 2078-34

DESIGNED BY C.A.R.

DRAWN BY J.R.M.

CHECKED BY C.A.R.

REVIEWED BY C.A.R.

DATE JANUARY 2024

SCALE AS NOTED

**nse**  
OF KENTUCKY, INC.  
Engineers  
Architects  
Planners

Phone: (619)225-5694  
Fax: (619)225-2607

PROJECT NO. 2078-34

DESIGNED BY C.A.R.

DRAWN BY J.R.M.

CHECKED BY C.A.R.

REVIEWED BY C.A.R.

DATE JANUARY 2024

SCALE AS NOTED

**nse**  
OF KENTUCKY, INC.  
Engineers  
Architects  
Planners

Phone: (619)225-5694  
Fax: (619)225-2607

PROJECT NO. 2078-34

DESIGNED BY C.A.R.

DRAWN BY J.R.M.

CHECKED BY C.A.R.

REVIEWED BY C.A.R.

DATE JANUARY 2024

SCALE AS NOTED

**nse**  
OF KENTUCKY, INC.  
Engineers  
Architects  
Planners

Phone: (619)225-5694  
Fax: (619)225-2607

PROJECT NO. 2078-34

DESIGNED BY C.A.R.

DRAWN BY J.R.M.

CHECKED BY C.A.R.

REVIEWED BY C.A.R.

DATE JANUARY 2024

SCALE AS NOTED

**nse**  
OF KENTUCKY, INC.  
Engineers  
Architects  
Planners

Phone: (619)225-5694  
Fax: (619)225-2607

PROJECT NO. 2078-34

DESIGNED BY C.A.R.

DRAWN BY J.R.M.

CHECKED BY C.A.R.

REVIEWED BY C.A.R.

DATE JANUARY 2024

SCALE AS NOTED

**nse**  
OF KENTUCKY, INC.  
Engineers  
Architects  
Planners

Phone: (619)225-5694  
Fax: (619)225-2607

PROJECT NO. 2078-34

DESIGNED BY C.A.R.

DRAWN BY J.R.M.

CHECKED BY C.A.R.

REVIEWED BY C.A.R.

DATE JANUARY 2024

SCALE AS NOTED

**nse**  
OF KENTUCKY, INC.  
Engineers  
Architects  
Planners

Phone: (619)225-5694  
Fax: (619)225-2607

PROJECT NO. 2078-34

DESIGNED BY C.A.R.

DRAWN BY J.R.M.

CHECKED BY C.A.R.

REVIEWED BY C.A.R.

DATE JANUARY 2024

SCALE AS NOTED

**nse**  
OF KENTUCKY, INC.  
Engineers  
Architects  
Planners

Phone: (619)225-5694  
Fax: (619)225-2607

PROJECT NO. 2078-34

DESIGNED BY C.A.R.

DRAWN BY J.R.M.

CHECKED BY C.A.R.

REVIEWED BY C.A.R.

DATE JANUARY 2024

SCALE AS NOTED

**nse**  
OF KENTUCKY, INC.  
Engineers  
Architects  
Planners

Phone: (619)225-5694  
Fax: (619)225-2607

PROJECT NO. 2078-34

DESIGNED BY C.A.R.

DRAWN BY J.R.M.

CHECKED BY C.A.R.

REVIEWED BY C.A.R.

DATE JANUARY 2024

SCALE AS NOTED

**nse**  
OF KENTUCKY, INC.  
Engineers  
Architects  
Planners

Phone: (619)225-5694  
Fax: (619)225-2607

PROJECT NO. 2078-34

DESIGNED BY C.A.R.

DRAWN BY J.R.M.

CHECKED BY C.A.R.

REVIEWED BY C.A.R.

DATE JANUARY 2024

SCALE AS NOTED

**nse**  
OF KENTUCKY, INC.  
Engineers  
Architects  
Planners

Phone: (619)225-5694  
Fax: (619)225-2607

PROJECT NO. 2078-34

DESIGNED BY C.A.R.

DRAWN BY J.R.M.

CHECKED BY C.A.R.

REVIEWED BY C.A.R.

DATE JANUARY 2024

SCALE AS NOTED

**nse**  
OF KENTUCKY, INC.  
Engineers  
Architects  
Planners

Phone: (619)225-5694  
Fax: (619)225-2607

PROJECT NO. 2078-34

DESIGNED BY C.A.R.

DRAWN BY J.R.M.

CHECKED BY C.A.R.

REVIEWED BY C.A.R.

DATE JANUARY 2024

SCALE AS NOTED

**nse**  
OF KENTUCKY, INC.  
Engineers  
Architects  
Planners

Phone: (619)225-5694  
Fax: (619)225-2607

PROJECT NO. 2078-34

DESIGNED BY C.A.R.

DRAWN BY J.R.M.

CHECKED BY C.A.R.

REVIEWED BY C.A.R.

DATE JANUARY 2024

SCALE AS NOTED

**nse**  
OF KENTUCKY, INC.  
Engineers  
Architects  
Planners

Phone: (619)225-5694  
Fax: (619)225-2607

PROJECT NO. 2078-34

DESIGNED BY C.A.R.

DRAWN BY J.R.M.

CHECKED BY C.A.R.

REVIEWED BY C.A.R.

DATE JANUARY 2024

SCALE AS NOTED

**nse**  
OF KENTUCKY, INC.  
Engineers  
Architects  
Planners

Phone: (619)225-5694  
Fax: (619)225-2607

PROJECT NO. 2078-34

DESIGNED BY C.A.R.

DRAWN BY J.R.M.

CHECKED BY C.A.R.

REVIEWED BY C.A.R.

DATE JANUARY 2024

SCALE AS NOTED

**nse**  
OF KENTUCKY, INC.  
Engineers  
Architects  
Planners

Phone: (619)225-5694  
Fax: (619)225-2607

PROJECT NO. 2078-34

DESIGNED BY C.A.R.

DRAWN BY J.R.M.

CHECKED BY C.A.R.

REVIEWED BY C.A.R.

DATE JANUARY 2024

SCALE AS NOTED

**nse**  
OF KENTUCKY, INC.  
Engineers  
Architects  
Planners

Phone: (619)225-5694  
Fax: (619)225-2607

PROJECT NO. 2078-34

DESIGNED BY C.A.R.

DRAWN BY J.R.M.

CHECKED BY C.A.R.

REVIEWED BY C.A.R.

DATE JANUARY 2024

SCALE AS NOTED

**nse**  
OF KENTUCKY, INC.  
Engineers  
Architects  
Planners

Phone: (619)225-5694  
Fax: (619)225-2607

PROJECT NO. 2078-34

DESIGNED BY C.A.R.

DRAWN BY J.R.M.

CHECKED BY C.A.R.

REVIEWED BY C.A.R.

DATE JANUARY 2024

SCALE AS NOTED

**nse**  
OF KENTUCKY, INC.  
Engineers  
Architects  
Planners

Phone: (619)225-5694  
Fax: (619)225-2607

PROJECT NO. 2078-34

DESIGNED BY C.A.R.

DRAWN BY J.R.M.

CHECKED BY C.A.R.

REVIEWED BY C.A.R.

DATE JANUARY 2024

SCALE AS NOTED

**nse**  
OF KENTUCKY, INC.  
Engineers  
Architects  
Planners

Phone: (619)225-5694  
Fax: (619)225-2607

PROJECT NO. 2078-34

DESIGNED BY C.A.R.

DRAWN BY J.R.M.

CHECKED BY C.A.R.

REVIEWED BY C.A.R.

DATE JANUARY 2024

SCALE AS NOTED

**nse**  
OF KENTUCKY, INC.  
Engineers  
Architects  
Planners

Phone: (619)225-5694  
Fax: (619)225-2607

PROJECT NO. 2078-34

DESIGNED BY C.A.R.

DRAWN BY J.R.M.

CHECKED BY C.A.R.

REVIEWED BY C.A.R.

DATE JANUARY 2024

SCALE AS NOTED

**nse**  
OF KENTUCKY, INC.  
Engineers  
Architects  
Planners

Phone: (619)225-5694  
Fax: (619)225-2607

PROJECT NO. 2078-34

DESIGNED BY C.A.R.

DRAWN BY J.R.M.